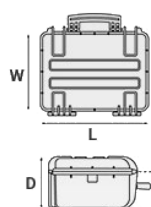


Mod. 3317 B

COPOLYMER POLYPROPYLENE WATERPROOF CASE



METRIC MM-KG-C°



INTERNAL DIMENSIONS

L LENGTH	330 mm
W WIDTH	234 mm
D DEPTH	170 mm
LID	68 mm
BASE	102 mm

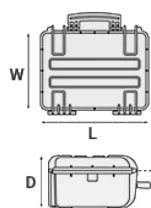
EXTERNAL DIMENSIONS

L LENGTH	360 mm
W WIDTH	304 mm
D DEPTH	194 mm

OTHER DATA

WEIGHT EMPTY	2.29 Kg
WEIGHT WITH FOAM	2.51 Kg
WEIGHT WITH CUSTOM FOAM	Kg
VOLUME	13.10 lt
BUOYANCY	7 Kg/max
OPERATING TEMPERATURE	°C min -33 / max +90

IMPERIAL IN-LBS-F°



INTERNAL DIMENSIONS

L LENGTH	13 in
W WIDTH	9 3/16 in
D DEPTH	6 11/16 in
LID	2 11/16 in
BASE	4 in

EXTERNAL DIMENSIONS

L LENGTH	14 3/16 in
W WIDTH	11 15/16 in
D DEPTH	7 5/8 in

OTHER DATA

WEIGHT EMPTY	5.04 lbs
WEIGHT WITH FOAM	5.53 lbs
WEIGHT WITH CUSTOM FOAM	lbs
VOLUME	3.43 gal
BUOYANCY	15.43 lbs/max
OPERATING TEMPERATURE	°F min -27.4 / max +194

FEATURES



CORROSION PROOF METAL HINGES WITH LID STAY FEATURES



LID CAN BE SET TO SLIDE-OFF

By releasing the back screw, lid becomes set to slide-off when opened at 70°



SEALING O-RING

(Art. NEOSEAL + nr. art.)



LATCH



INTERNAL SLOTS

Internal slots for optional panel mounting brackets or panel mounting rings



COUNTERBALANCE SUPPORTS

(in certain models)



PVC WATERPROOF I. D. REMOVABLE LABEL

(Art. LABELCOVER + nr. art.)



MANUAL PRESSURE RELEASE VALVE

The internal stop ring prevents valve from being completely extracted (Art. PURGEVALVE.B)

ACCESSORIES



PROTECTIVE SLEEVE FOR PC 13'-13.3'''

TOP ENVELOPE 13

Protective padded notebook sleeve. Protects the laptop from shocks and scratches.



PADDED DIVIDER FOR 3317

DIV3317

Padded dividers with internal adjustable partitions. Ideal to protect and transport any kind of sensitive equipment. Thanks to their modularity, they can be easily combined.



LID PANEL WITH ORGANIZED POUCHES

PANEXPL33

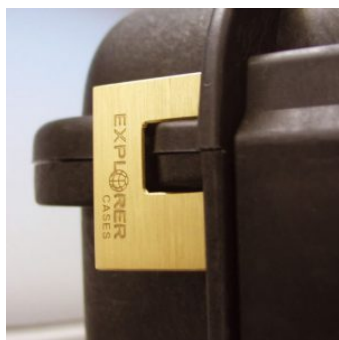
Practical and robust lid panel with pouches, ideal for small accessories and documents. Suitable for case 3317. Color: black.



PADDED BAG WITH ADJUSTABLE DIVIDERS

BAG-T

Highly durable padded bag with rubber coated handle and robust zipper with lockable Velcro pull zipper. Practical external front pouch for documents, removable shoulder strap and rubber feet on the bottom to grant better grip. Internal adjustable padded dividers for flexible configuration. Ideal to protect sensitive equipment (ie electronic, photographic, broadcasting, medical etc.). Suitable for case 3317. Color: black.

**PATENTED HEAVY DUTY BRASS PADLOCK WITH KEYS**

EXPL PADLOCK

Designed to fit snug to the Explorer case mould so as not to swing out

**CONVOLUTED FOAM SET FOR CASE 3317**

LIDFOAM.33

(includes 2 pcs.)

**PATENTED COMBINATION PADLOCK**

EXPL COMBILOCK

Designed to fit snug to the Explorer case mould so as not to swing out

**BLIND INSERT**

KIT.EXPL.PLUGS

Kit includes 6 pcs.

Whenever the slots are not going to be used for in-built applications, those can be closed by blind inserts that will give the case a better and finished interior look.



TSA APPROVED PADLOCK WITH COMBINATION

EXPL TSA.DIGILOCK

The new TSA approved padlocks allow tsa® airport security agents to open the case without destroying the lock. TSA agents are trained to recognize the travel sentry certified logo and should not break the case lock.



METAL BRACKET

KIT SUPP.EXPL.

Kit includes 6 pcs.

All models (except for the 1908) are internally equipped with specific slots, to apply the optional metal or plastic brackets which provide either a panel's fixing points or a fix mechanical joint inside the case, to build more complete applications. This way the case becomes a real workstation, rather than just a carrying container. As the panel mounting brackets are mechanically fixed by screws, they can be removed when necessary. The dedicated screws allow the case to remain waterproof, and help the panels to be removed easily and quickly



PANEL RING FOR CASE 3317

PANRING33

Includes Metric system fixing screws.

User friendly panel frames, they can be used to fix several kind of panels, from plastic to aluminum ones. Equipped with an additional gasket (which will be squeezed in between the panel and the frame) they can provide the case with a perfect instrumentation surface and a further humidity and dust resistance when the case is used in the field.

Completely removable, resistant and light, these panel rings help to transform the Explorer cases into practical workstations.



PLASTIC BRACKET

KIT SUPP.PLAST.

Kit includes 6 pcs.

All models (except for the 1908) are internally equipped with specific slots, to apply the optional metal or plastic brackets which provide either a panel's fixing points or a fix mechanical joint inside the case, to build more complete applications. This way the case becomes a real workstation, rather than just a carrying container. As the panel mounting brackets are mechanically fixed by screws, they can be removed when necessary. The dedicated screws allow the case to remain waterproof, and help the panels to be removed easily and quickly



FOAM SET FOR CASE 3317

FOAM.3317

Layers of pre cubed foam for the bottom and convoluted foam for the lid



PANEL RING FOR CASE 3317

PANRING33.USA

Includes Imperial system fixing screws.

User friendly panel frames, they can be used to fix several kind of panels, from plastic to aluminum ones. Equipped with an additional gasket (which will be squeezed in between the panel and the frame) they can provide the case with a perfect instrumentation surface and a further humidity and dust resistance when the case is used in the field.

Completely removable, resistant and light, these panel rings help to transform the Explorer cases into practical workstations.



HANDY BACKPACK CARRYING SYSTEM FOR CASES

BACKPACK M

Made of robust tear resistant polyester. Designed with adjustable and comfortable padded shoulder straps and belt.

Provided with an external pocket for small accessories, with Velcro strap.

Ideal wherever a free hand movement is required, like in outdoor activities, extreme sports, emergency, rescue, trekking, industrial field, etc.

Suitable for models 3317, 3818 and 5117.

Color: black.

SPARE PARTS



Polyurethane o-ring seal for model 3317

KIN.0848

Includes:
1 o-ring



Name tag holder for models from 2712 up

KIN.0496

Includes:
1 transparent name tag holder



Latch for models from 2712 to 3317

KIN.0439

Includes:
1 black latch
1 fixing pin



Manual pressure release valve for models from 2712 up

KIN.0495

Includes:
1 black purge valve (+ o-ring + pin)
1 threaded bush
1 snap ring (Seeger)



EPDM extruded o-ring seal for model 3317

KIN.0474

Includes:
1 o-ring



Handle for model from 2712 to 3317

KIN.0475

Includes:
1 black handle
2 fixing pins